

TIDALIS

/ Unlocking your Port's potential



PortControl



TIDALIS

As in many industries, digitalisation enables ports to boost productivity and serve their customers better. Some ports grasped this opportunity for growth decades ago, other ports, still rely on paper forms and whiteboards, or maybe use spreadsheets.

The early adopters have benefitted from digitalisation, but may be unaware of the advantages more modern solutions bring. Those ports and the ones still relying on manual administration are missing out on operational and business gains, and therefore still have potential to be unlocked. Fortunately, digitalisation need not be a big bang scenario. It is entirely possible to start small and grow grand, and that is in fact what we are encouraging ports to do.

Ports thrive because authorities, service providers and ship operators work in concert to move goods and people as efficiently as they can. Clockwork requires coordination. That is where pen, paper and phone calls fall short in being efficient in today's age.

Even where some of the players have digitalised, they often still live within their own information silos. Their own work might be optimised, but for the port as a whole, it could be suboptimal. A proper Port Management Information System (PMIS) brings synergies that significantly boost productivity and lowers costs.

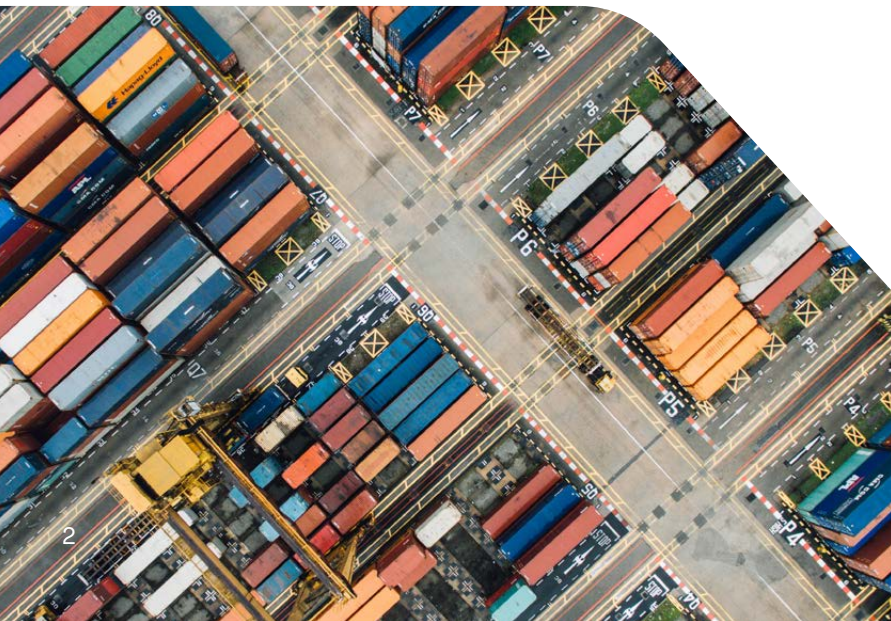
PortControl is an integral part of our concept where the whole of operations in ports, terminals and vessel traffic management is optimised through information sharing and collaborative decision making.

Single Point of Truth

A major benefit of the PortControl solution is that it has all the operational information in one place. Data is entered once, avoiding copying errors.

People working in or with the port have access to the information they need, and it is the same information available at the same time. Much less need for phone or radio calls to verify information because it is the ground truth. They see what you see.

Not only that, there is greater awareness of what is happening at the port because more information is presented in a much clearer way. For example, everybody can see the status of ships and where they are on their mobile device.



The screenshot displays the PortControl software interface. The top section shows a list of vessel visits with columns for Visit #, Vessel, Flags, Visit Reason, Arrival Time, Departure Time, Status, Marine Services, and Oas Services. The vessels listed include VEGA VIRGO, KOKOPO CHIEF, FAIRCHILD PRIZELA, STOLT HAGI, PHOEBE, OOCL ITALY, ASIAN EMPIRE, and MERCHANT. The bottom section shows a detailed movement view for a specific vessel, including Schedule Time, Flags, Type, Status, Agency / Ins. Body, From Location, To Location, Start Time, End Time, Marine Services, and Shore Services.

PortControl gets you results



Get paid for all services provided, fast and with no discussions

PortControl registers and manages all activities and uses all operational data to generate an invoice and send it out promptly. The invoicing can handle the most complex tariffs and contracts, including those with conditional discounts and markups. Invoicing data is transferred to the General Ledger (GL) application automatically for follow-up.



Ease of doing business: transparent and fast

PortControl offers a portal for agents and suppliers to register visits and apply for berthing. The systems provide a real-time overview of the current and planned situation. Information entered once is available for the stakeholders and offers a single version of the truth. Doing business with the port via PortControl is easy and transparent.



Attract more traffic, get more revenue

PortControl allows for better planning of the berths and better scheduling of arrivals/departures of vessels. Better use of the quay space available means more vessels handled. All related services provided by the port are linked to a vessel visit. More visits means more revenue and better margins.



Sustainable: care for business, cargo, environment, customers, people, equipment, infrastructure and assets

PortControl, especially in combination with the MaritimeControl Vessel Traffic Services (VTS) system, makes sure vessels select the best-suited trajectory from anchorage to berth and vice versa. Resource usage is optimised. Just-In-Time operations reduce fuel usage, and therefore emissions, by up to 14%.



Zero accidents

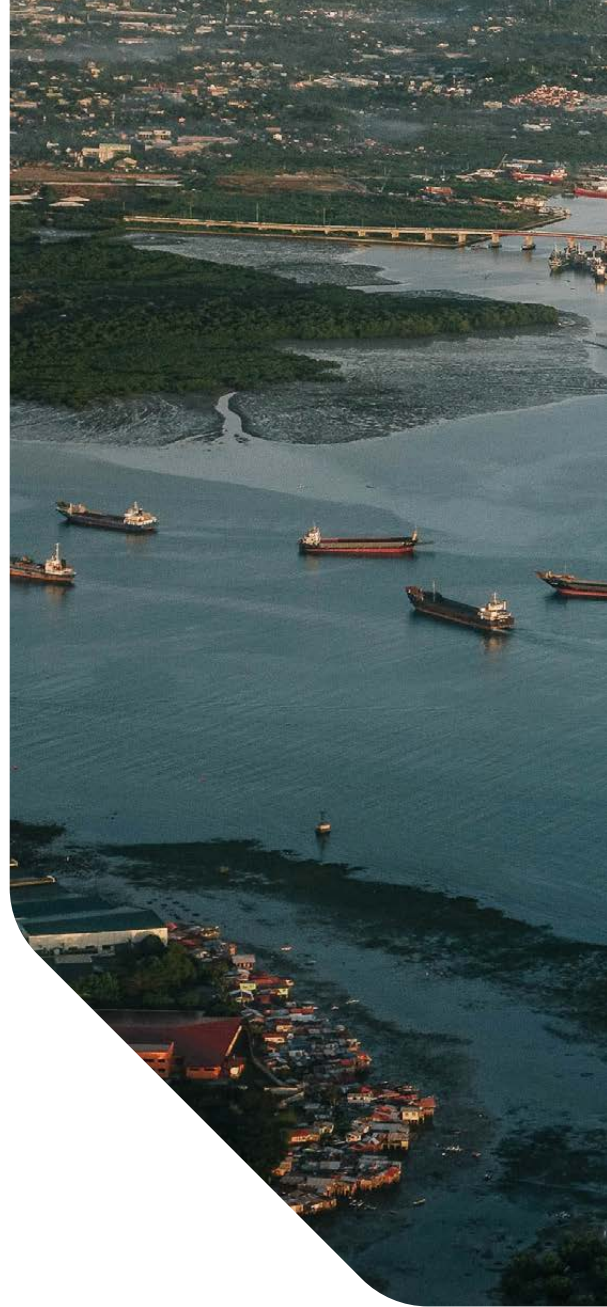
PortControl can manage the entire port: plans the berths and resources working in the port. Planning pilots, according to their qualification and constraints, enforces safe navigation in the port area preventing accidents from happening. Business rules warn for hazardous situations, such as a vessel draught exceeding berth depth.

Unlocking your port's potential

Property Management

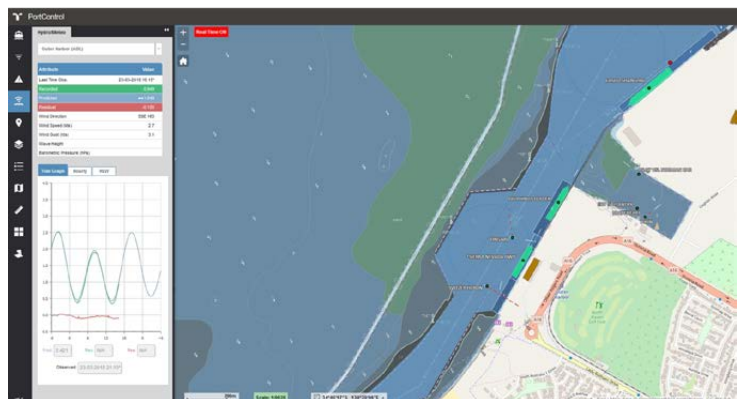
An often overlooked part of port operations is support for property management. Unlike generic property management solutions, PortControl takes specialised port needs into account. Take for example:

- rent rates that depend on cargo volumes handled;
- management of additional land use to store unexpected volumes of cargo (overspill);
- constraints from dangerous goods.
- All of these aspects and more are part of PortControl and integrate seamlessly with billing and financial administration modules.



Common Operating Picture (COP)

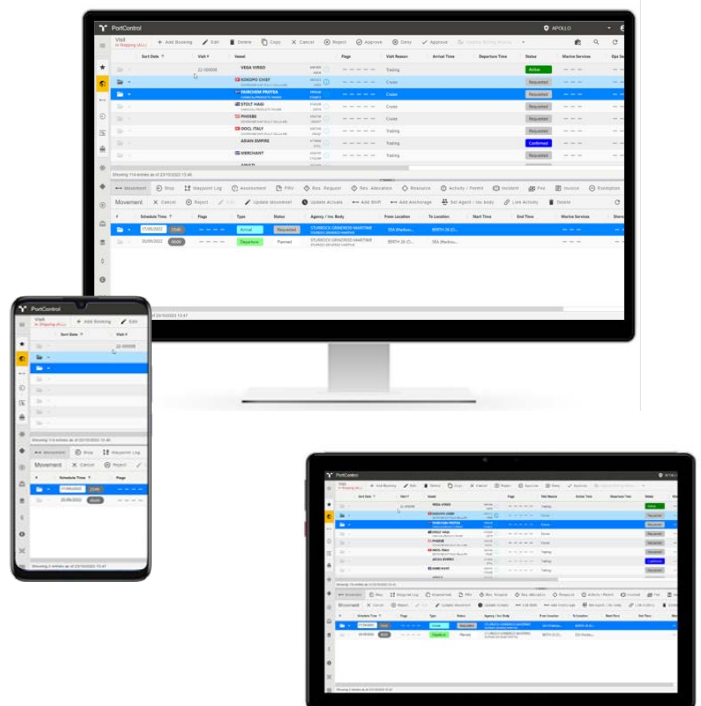
The Common Operating Picture (COP) combines operational and cargo information with Geographical Information System (GIS) data such as ESRI can provide. The result is real-time situational awareness through a map-based overview of what is happening in the port. The COP presents all the information the user needs in a single application in layers that can be switched on and off as needed. It readily integrates with 3rd party information sources, for example weather services and maps from utilities. This is where the Single Point of Truth meets web, and it is a powerful combination.





Work everywhere on any device

PortControl is accessible from any device that supports one of the major web browsers. This means that the people on the docks or on board the ships can report directly on their progress. This is a powerful aspect of PortControl that makes it a transparent tool with the latest information delivered quickly.



Committed to our customers

With PortControl, Tidalis provides much more than industry-leading solutions. We become your trusted partner, forming a long-term relationship to future-proof your port and community against any technological developments, including cyber security, and meet your ever-changing requirements.

We support our customers 24/7 every step of the way – including eight of the top twenty container ports in the world, along with port authorities and port service providers across six continents.

A complete, scalable smart port solution

With PortControl, ports and their communities benefit from ongoing development, such as the use of Artificial Intelligence to improve the quality of cargo manifests. It is no exception that information sent ahead by agents does not match one for one with the stevedore's document. Our intelligent cargo handling gets 98% of the manifests processed without manual intervention where other systems do not get past 40%.

We also offer integrated Pilot Dispatch Management for ports with their own pilotage service.

As can be seen below, PortControl provides the modules needed to cover any port need, from landlord ports to full-service ports. Every module is optional, and custom interfaces to external systems are possible, e.g. for financial administration.

PortControl module examples

	Visit Management	Billing Management	Service Management
Self Service (external)	Submit Notice of Arrival Permits Attach Documents Public Schedule Ships In Port (public)	View Invoices	Service Request Confirmation 3rd Party Allocation 3rd Party Mobile App
Customer Service (internal)	Activities Defects DG Management Incidents Management Local Fleet management NOA Approval Services management Visit/Movement Planning Work Permits	Contracts Discount Minimum Guarantee Special Rates	Common Operating Picture LCM Activity reporting Allocations Calendar Facility/Restriction FTZ (Work Orders) Rotation
Workflow Automation	Berth Planning Assessment Rules Port Rule Variations Regular Runners Restrictions Status Changes Tidal Info Integration ext. interfaces	Generate Fees Billing Tasks flow Email/Print invoices Generate Invoices Invoice Adjustments Rates Updates Recurring billing Reverse Invoice	Fatigue Management Message Center
Analysis	Common Operating Picture	Reporting Engine	Reporting Engine



About Tidalis

Tidalis delivers a wide range of integrated solutions to maritime users around the world. These solutions allow our customers to:

- Manage safety and efficiency of traffic on waterways
- Protect the environment
- Run efficient ports
- Support law enforcement and coastguards

An active participant

Tidalis is an active member of the following organisations:

- American Association of Port Authorities (AAPA)
- International Association of Marine Aids to Navigation and Lighthouse Authorities (IALA)
- International Association of Ports and Harbors (IAPH)
- International Harbour Masters Association (IHMA)

These memberships allow us to gain the most up-to-date information about the relevant issues waterway authorities face around the world today. This puts us in the driving seat in terms of using our in-depth market awareness to deliver the services our customers need most.

Cargo Management	Property Management	A/R & Finance	All
Submit Cargo Manifest Submit Operation Actuals			
Commodity Management Reporting Groups Storage & Demurrage Waste & DG	Common Operating Picture Agreements Inspections Port Permits Properties Rent Late Charges Rent Roll Tenants	Apply Budget Credit Debit Financial Charges GL Distribution control Non-AR revenue	Attach Documents
Manifest Import Error Checking	Expiry reminders Meters Interface (3rd Party) Milestones/Checklists Rent increase / update	GL Export	Audit
Reporting Engine	Reporting Engine	Account Statement	



TIDALIS

<https://tidalis.com/solutions/port-management/>
info@tidalis.com

Netherlands

Tidalis B.V.
Laan van Malkenschoten 40
7333 NP, Apeldoorn
The Netherlands

T: +31 55 543 25 00

Hong-Kong

Tidalis APAC Limited
Unit 1901-04, 19/F, Nam Wo Hong Building
148 Wing Lok Street, Sheung Wan
Hong Kong

T: +852 2905 1633

Canada

Tidalis Americas Ltd.
#300 – 3500 Gilmore Way,
Burnaby, BC, Canada V5G 0B8

T: +1 604 689 7117

There is always one of our offices available in a time zone near you. Next to our three main offices we have three additional locations in Belgium, The Netherlands and Sweden.